

A top-down photograph of a light-colored wooden desk. A black stethoscope is draped across the upper right. A blue folder or clipboard is partially visible on the left. In the lower center, there is a black fountain pen with its cap off, a black pen cap, and a pair of black-rimmed glasses. A red semi-transparent rectangular box is overlaid in the center, containing white text.

HEALTH SCIENCE MEETINGS

USC Private Events & Conferences



Thank you for considering the USC Health Sciences Conference Center for your upcoming event! Located on the basement level of the Hyatt House University Medical Center at USC's Health Science Campus, our venue is the perfect location for small to mid-size events and conferences. Please reach out to our team with any questions you may have about our facility.

Leticia Velazquez
Catering Sales Manager, Private Events & Conferences
USC Hospitality
leticia.velazquez@usc.edu
213.740.1411

Karla Campos
Associate Director, Private Events & Conferences
USC Hospitality
karla.campos@usc.edu
213.821.3476

USC Private Events & Conferences

2200 Trojan Way, #070 | Los Angeles, CA 90033 | (213) 740-1411 | uscprivateevents.com | private.events@usc.edu

As of July 1, 2024, a service charge of 23% will apply to all food and beverage revenues. Of this fee, 19% is distributed to the servers of your event and 4% is distributed as an administration fee. A service charge of 23% will also apply to additional items indicated on your BEO, such as, but not limited to, audio visual, rentals and florals. This fee, in its entirety, is distributed as an administration fee, it is not distributed to the servers of your event.

COMPLETE MEETING PACKAGES

CARDINAL DAY PACKAGE

Minimum 40 Guests

Includes Room Rental, Pads and Pens and Mints

All Day Beverage Service

Up to Eight Hours of Continuous Service

Regular and Decaffeinated Coffee

Half & Half, 2% Milk, Almond Milk, Oat Milk, Sugar, Turbinado Sugar and Stevia

Assorted Herbal Teas with Lemon and Honey

Filtered Ice Water

Iced Tea

Continental Breakfast

Assorted Breakfast Pastries, Sweet Butter and Fruit Preserves

Seasonal Sliced Fruit and Berries

Orange and Cranberry Juices

Sandwich Board

Choice of Two (2) of the Following:

Pasta Salad

Traditional Potato Salad

Broccoli Slaw

Cole Slaw

Seasonal Fruit Salad

Green Salad with White Balsamic Vinaigrette and Ranch Dressing

Tomato Basil Bisque

Assorted Hand-Crafted Sandwiches

Kettle Chips

Assorted Cookies and Dessert Bars

Afternoon Snack Break to include Assorted Packaged Snacks

Audio Visual Package

Ceiling Mounted LCD 6K Projector with 9'x12' Roll-Down Screen

Wired Podium Microphone, Mixer, House Sound System Patch

4 Channel Video Switcher

Laptop for Program

Wireless Remote Clicker

Video Display Adapters, Misc. AV and Power Cables

Set/Strike & Operator labor is an additional hourly charge.

\$95++ Per Person

USC Private Events & Conferences

2200 Trojan Way, #070 | Los Angeles, CA 90033 | (213) 740-1411 | uscprivateevents.com | private.events@usc.edu

As of July 1, 2024, a service charge of 23% will apply to all food and beverage revenues. Of this fee, 19% is distributed to the servers of your event and 4% is distributed as an administration fee. A service charge of 23% will also apply to additional items indicated on your BEO, such as, but not limited to, audio visual, rentals and florals. This fee, in its entirety, is distributed as an administration fee, it is not distributed to the servers of your event.

COMPLETE MEETING PACKAGES

GOLD DAY PACKAGE

Minimum 40 Guests

Includes Room Rental, Pads and Pens and Mints

All Day Beverage Service

Up to Eight Hours of Continuous Service

Regular and Decaffeinated Coffee

Half & Half, 2% Milk, Almond Milk, Oat Milk, Sugar, Turbinado Sugar and Stevia

Assorted Herbal Teas with Lemon and Honey

Filtered Ice Water

Iced Tea

Hot Breakfast Buffet

Cage-Free Scrambled Eggs

Choice of Two:

Applewood Smoked Bacon

Canadian Bacon

Turkey Sausage

Pork Breakfast Sausage Links

Chicken Apple Sausage

Vegan sausage: upcharge \$4 per person

Choice of One:

Seasoned Roasted Yukon Gold Potatoes

Crispy Tater Tots

Golden Brown Hash Browns

Choice of Two:

Assorted Breakfast Danishes and Pastries

Assorted Muffins

Assorted Scones

Sliced Tea Breads

Assorted Bagels with Cream Cheese

Assorted Chobani® Greek Yogurts with House-Made Granola

Seasonal Fresh Fruit and Berry Display

Choice of Two Juices:

Orange

Apple

Cranberry

USC Private Events & Conferences

2200 Trojan Way, #070 | Los Angeles, CA 90033 | (213) 740-1411 | uscprivateevents.com | private.events@usc.edu

As of July 1, 2024, a service charge of 23% will apply to all food and beverage revenues. Of this fee, 19% is distributed to the servers of your event and 4% is distributed as an administration fee. A service charge of 23% will also apply to additional items indicated on your BEO, such as, but not limited to, audio visual, rentals and florals. This fee, in its entirety, is distributed as an administration fee, it is not distributed to the servers of your event.

COMPLETE MEETING PACKAGES

GOLD DAY PACKAGE (cont)

Chef's Daily Lunch Buffet

Rotating Daily

Green Salad

Two Hot Entrees

One Starch Side

One Vegetable Side

Artisan Rolls and Butter

Dessert

Afternoon Snack

Fresh Seasonal Vegetables with an Assortment of Dips to include Hummus and Roasted Tomato Ranch and Romesco Sauce

Assorted Granola Bars and Packaged Snacks

Audio Visual Package

Ceiling Mounted LCD 6K Projector with 9'x12' Roll-Down Screen

Wired Podium Microphone, Mixer, House Sound System Patch

4 Channel Video Switcher

Laptop for Program

Wireless Remote Clicker

Video Display Adapters, Misc. AV and Power Cables

Set/Strike & Operator labor is an additional hourly charge.

\$125++ Per Person

USC Private Events & Conferences

2200 Trojan Way, #070 | Los Angeles, CA 90033 | (213) 740-1411 | uscprivateevents.com | private.events@usc.edu

As of July 1, 2024, a service charge of 23% will apply to all food and beverage revenues. Of this fee, 19% is distributed to the servers of your event and 4% is distributed as an administration fee. A service charge of 23% will also apply to additional items indicated on your BEO, such as, but not limited to, audio visual, rentals and florals. This fee, in its entirety, is distributed as an administration fee, it is not distributed to the servers of your event.

AUDIO VISUAL

Single Projector Audio Visual Package

Ceiling Mounted LCD 6K Projector with 9'x12' Roll-Down Screen
Wired Podium Microphone, Mixer, House Sound System Patch
4 Channel Video Switcher
Laptop for Program
Wireless Remote Clicker
Video Display Adapters, Misc. AV and Power Cables
\$950.00++

Dual Projector Audio Visual Package

2 - Ceiling Mounted LCD 6K Projector with 2 - 9'x12' Roll-Down Screen
Wired Podium Microphone, Mixer, House Sound System Patch
4 Channel Video Switcher
Laptop for Program
Wireless Remote Clicker
Video Display Adapters, Misc. AV and Power Cables
\$1,750.00++

Classroom Audio Visual Package

2 – 75" Wall Mounted Flat Screens
1-Laptop for PPT
Wireless Podium Microphone
Mixer, House Sound System
Wireless Remote Clicker
Miscellaneous AV and Power Cables
\$750.00++

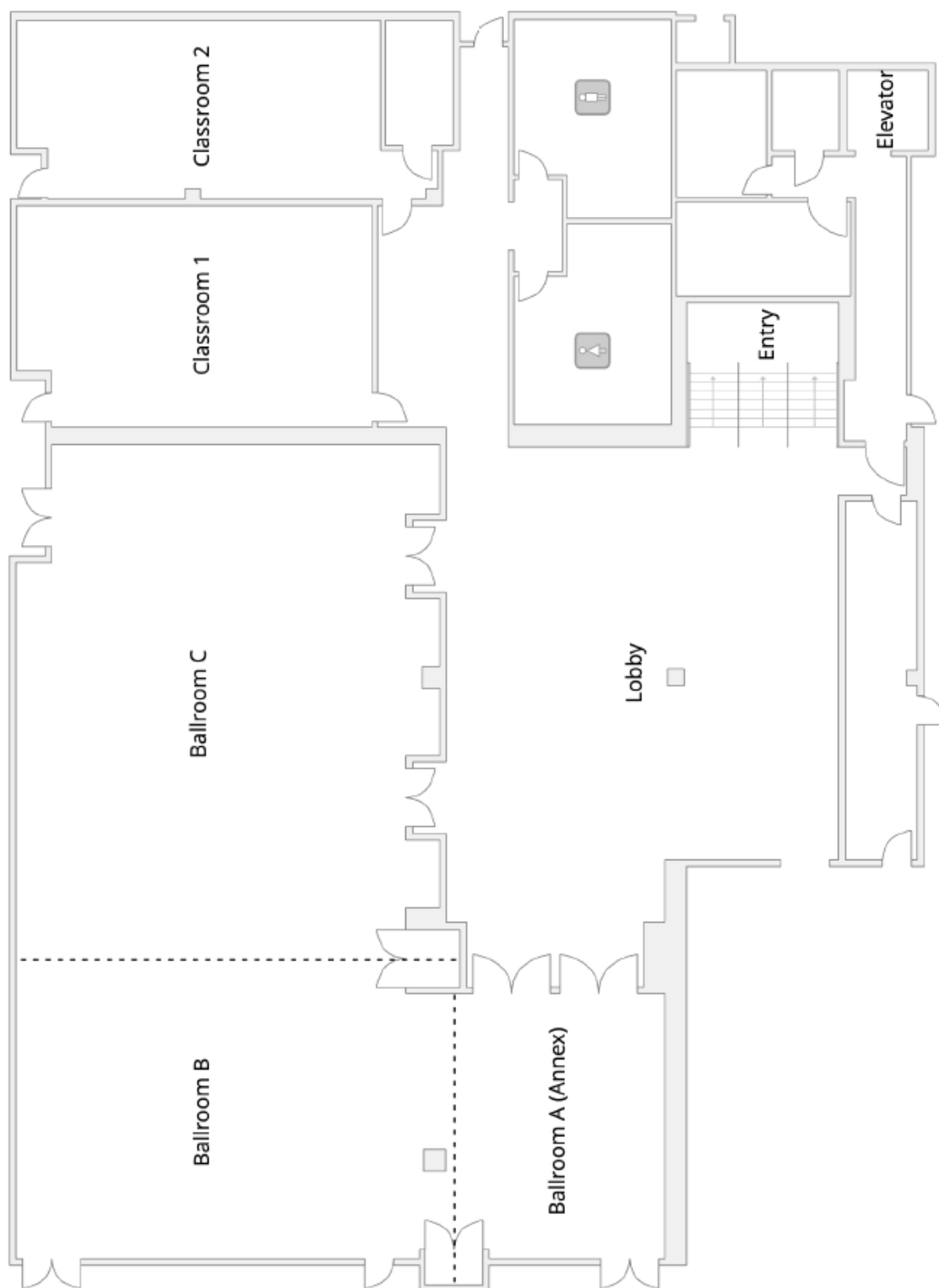
Set/Strike & Operator labor is an additional hourly charge.

USC Private Events & Conferences

2200 Trojan Way, #070 | Los Angeles, CA 90033 | (213) 740-1411 | uscprivateevents.com | private.events@usc.edu

As of July 1, 2024, a service charge of 23% will apply to all food and beverage revenues. Of this fee, 19% is distributed to the servers of your event and 4% is distributed as an administration fee. A service charge of 23% will also apply to additional items indicated on your BEO, such as, but not limited to, audio visual, rentals and florals. This fee, in its entirety, is distributed as an administration fee, it is not distributed to the servers of your event.

FLOORPLAN



USC Private Events & Conferences

2200 Trojan Way, #070 | Los Angeles, CA 90033 | (213) 740-1411 | uscprivateevents.com | private.events@usc.edu

As of July 1, 2024, a service charge of 23% will apply to all food and beverage revenues. Of this fee, 19% is distributed to the servers of your event and 4% is distributed as an administration fee. A service charge of 23% will also apply to additional items indicated on your BEO, such as, but not limited to, audio visual, rentals and florals. This fee, in its entirety, is distributed as an administration fee, it is not distributed to the servers of your event.